

absolute attention to detail

interiors

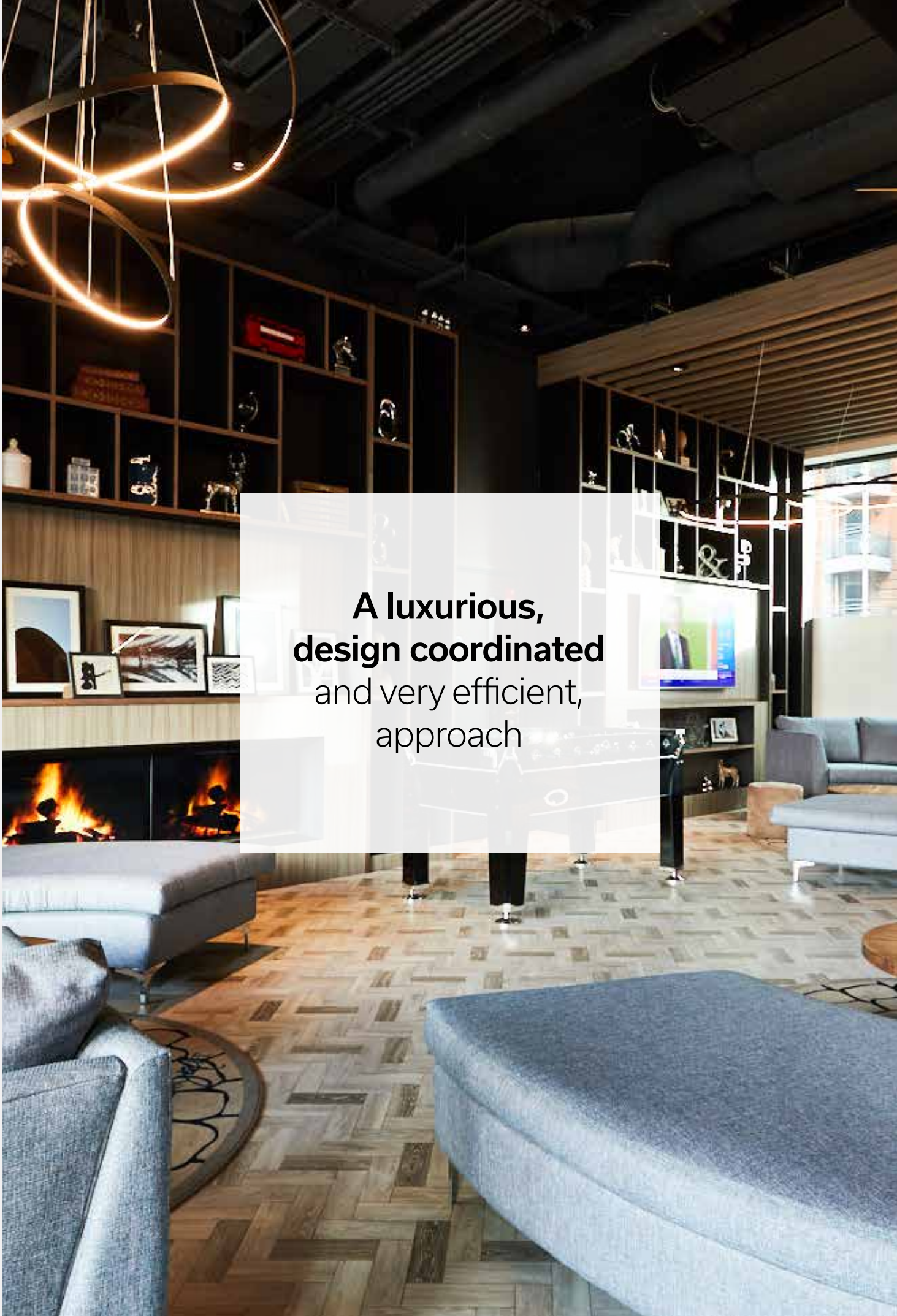
Project:interiors
Precise, Robust, Partnerships



Project: interiors are a main contractor specialising in managing the full project from feasibility studies to interior design, budgeting, project management, delivery, handover and aftercare.

Beautiful interiors
designed and created
for a better environment

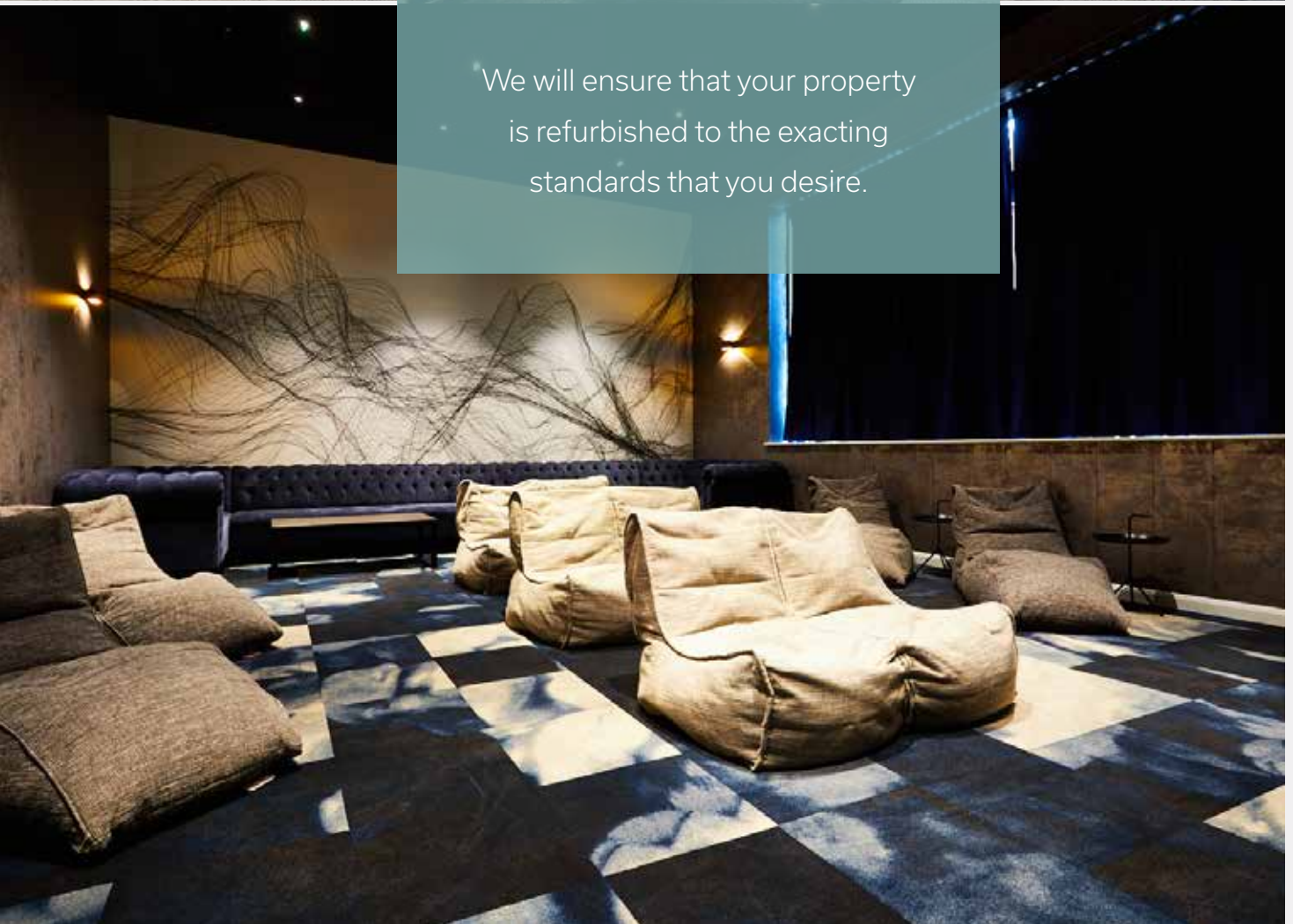






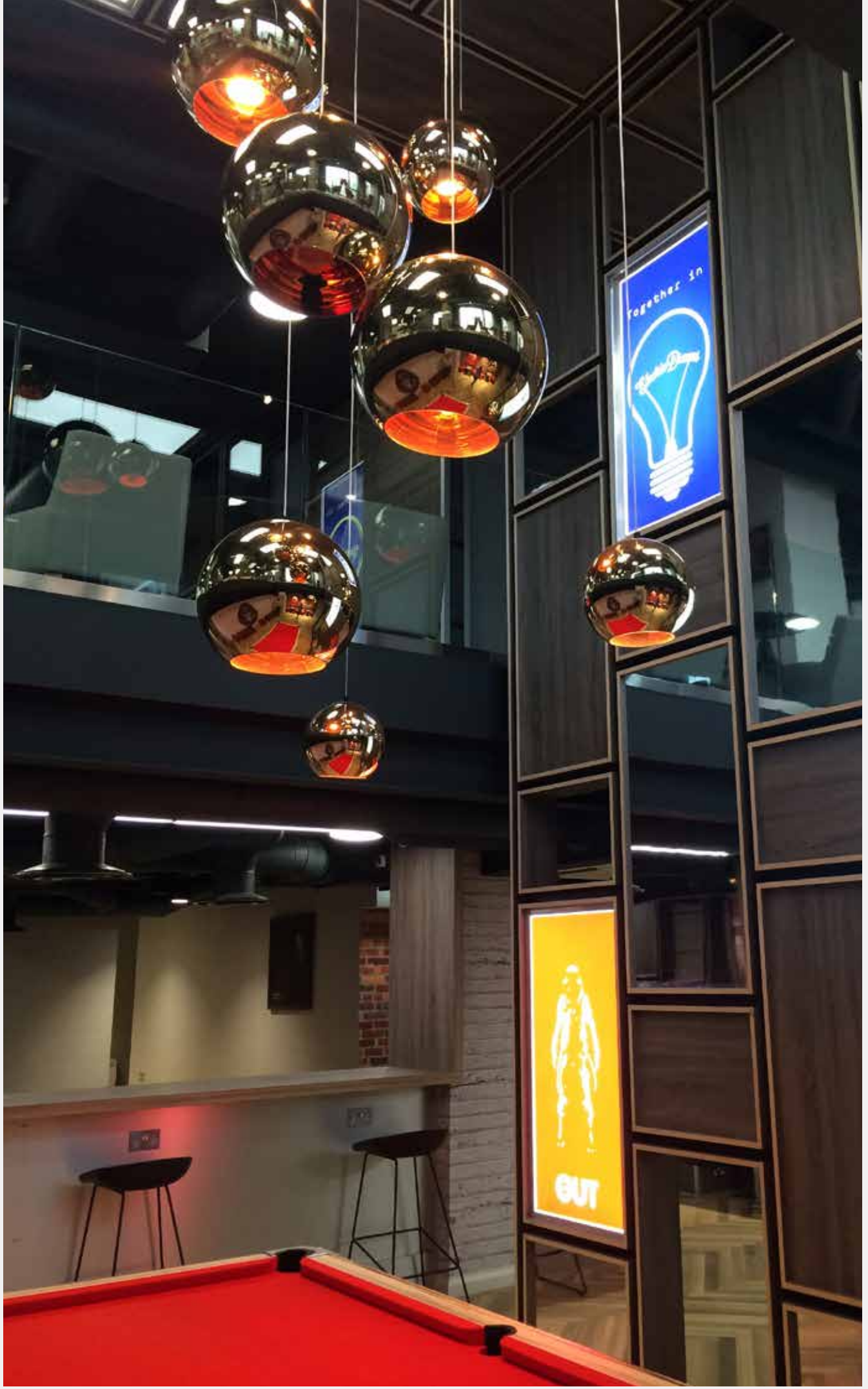
Refurbishment and interior fit out projects

We will ensure that your property
is refurbished to the exacting
standards that you desire.



Full fit out – which includes decoration, flooring, M&E, custom-made joinery and furniture, internal alterations, doors and windows

Our full range of capabilities & expertise ensures that you have only to engage with one main contractor.



Summer works – student bed upgrades, planned maintenance, flooring and furniture replacement

We are extremely experienced in ensuring that all the necessary, pre-site planning and design work is thoroughly done to ensure that the, sometimes immense, amount of work that is required in a relatively small time frame is carried out to the highest quality standards.



We have a wide range of experience in many sectors.

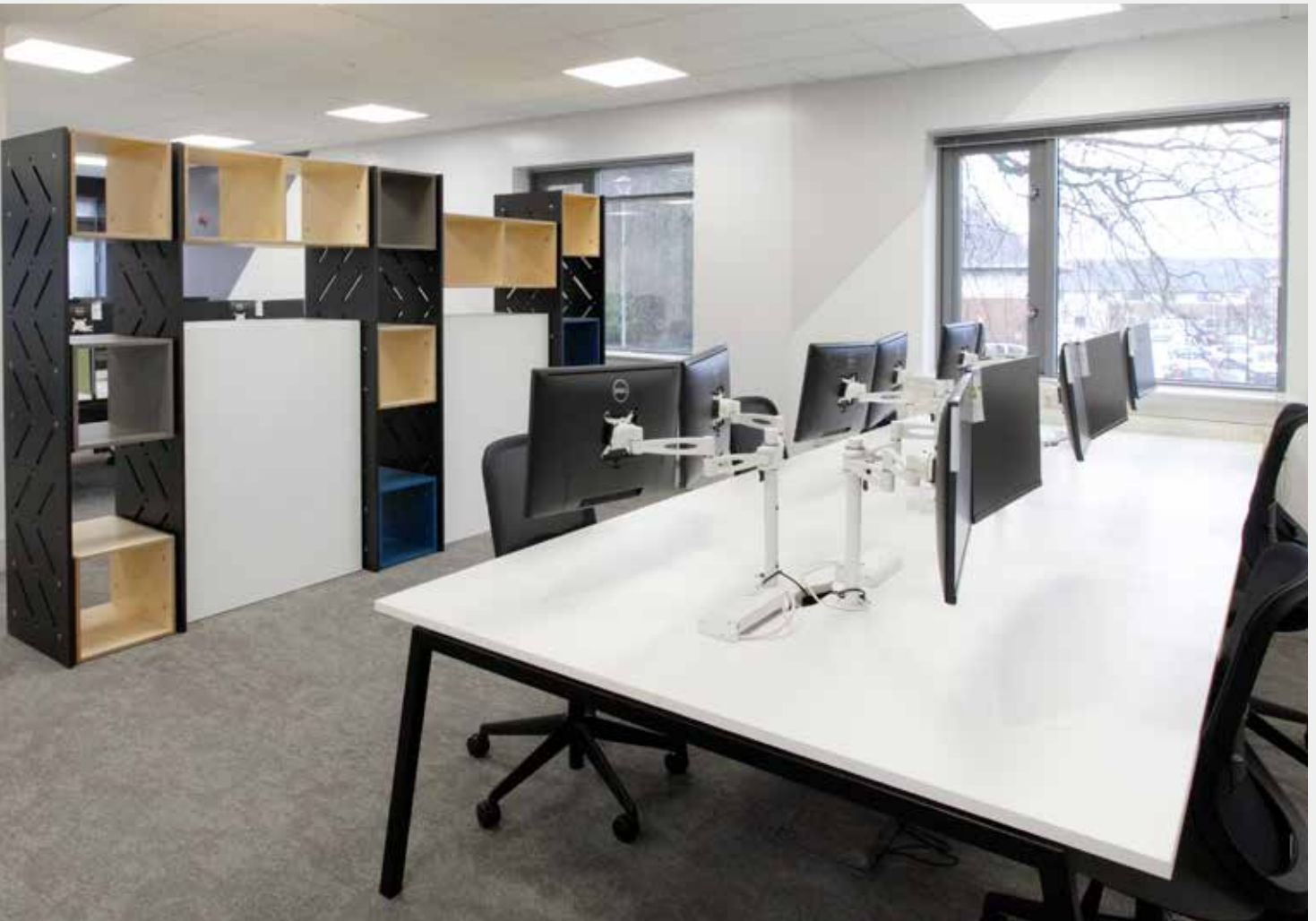
Commercial,
Offices,
Logistics,
Restaurants,

Industrial,
Transport,
Care home and
assisted living.





absolute attention to detail



project.interiors

We have a wide range of experience in many sectors.

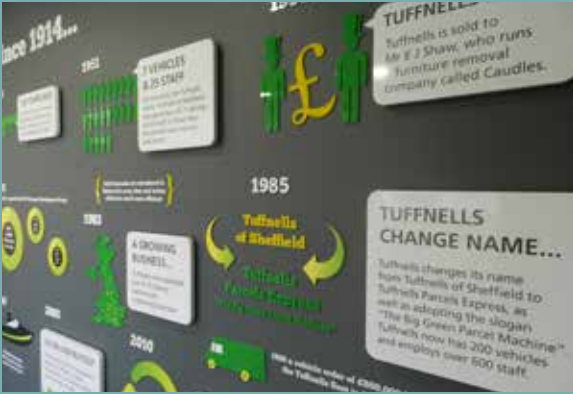
Commercial,
Offices,
Logistics,
Restaurants,

Industrial,
Transport,
Care home and
assisted living.

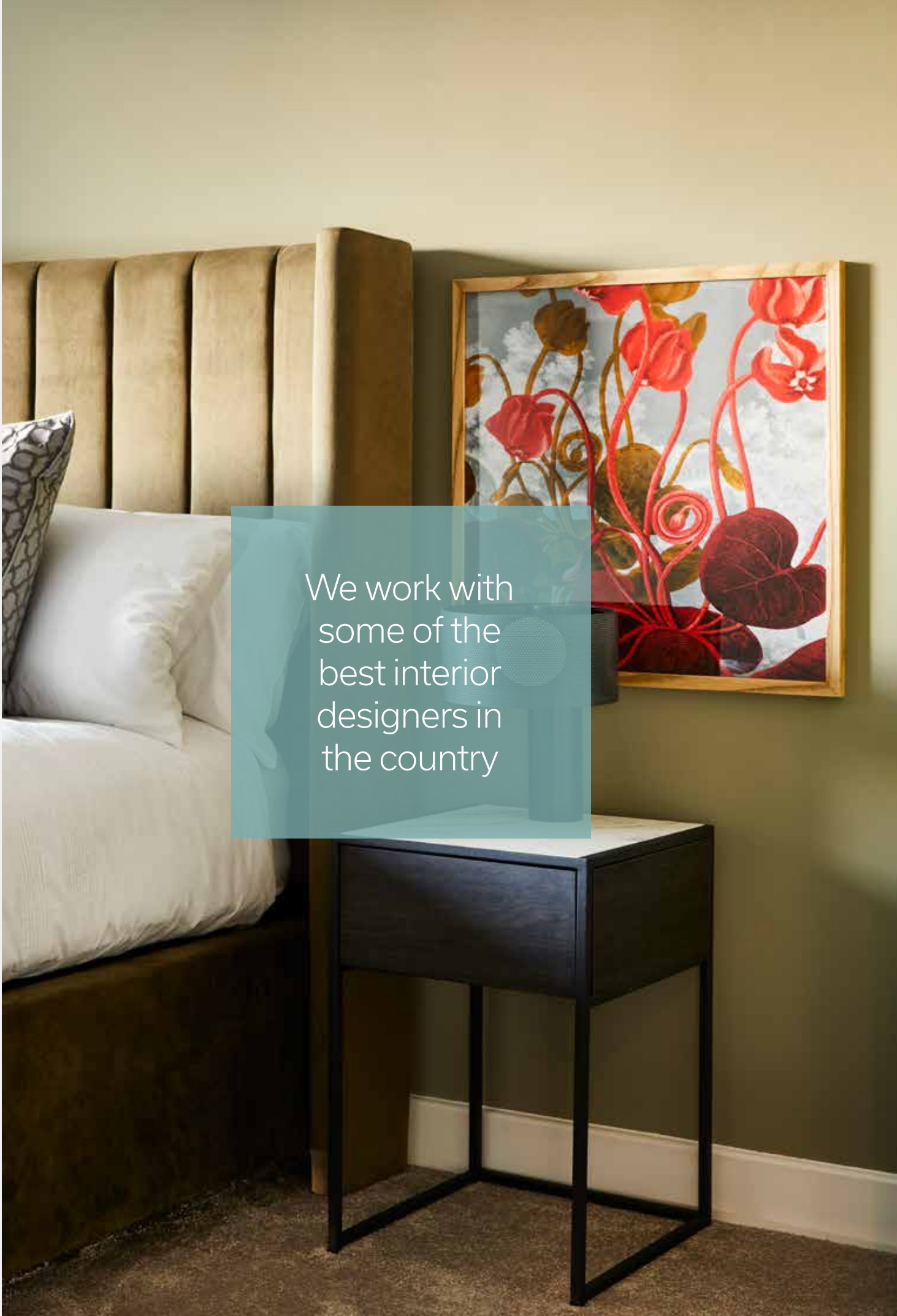




absolute attention to detail



project:interiors



We work with
some of the
best interior
designers in
the country



absolute attention to detail



"I've worked with the **Project Group** on a number of **major projects** now and defy any other company of its kind to be as **enthusiastic, knowledgeable** and **supportive** as the Project team. Their "**can-do**" attitude is **matchless** and complemented with **real ability to deliver.**"

Naomi Cleaver

projectinteriors

Our Process

Your proposed project team is centred around the key individuals who will ensure your needs are being met throughout the whole journey of the project - from tender stage right through to completion.

Technical expertise is included within the team and these key individuals will be involved through the pre-planning, procurement, delivery, installation and 'day two' stages to ensure your aspirations have not only been captured, but also understood. Our team are not only experienced in all types of internal fit out and new build construction, but we are well versed in working together as a team - both internally and with you chosen representatives.

Tender

During the initial tender process we gather all the relevant information issued (ER's, drawings, NBS, etc.). More often than not there is conflicting information within these documents. It is our approach to list out all the information contained within these documents and highlight in red areas

which either conflict or we cannot comply with. This process is adhered to throughout the project, so we can be clear on items that may have to change or be substituted giving clear sight to the client of what will be there at the end.

Design

The design process is key to the success of a project. From the outset of the project a Design Manager will be assigned to the project who will initially carry out the product design,

space planning, specification sign off and sample rooms. The Design Technician will also start to look at products with extended lead times and advise the client of them.

Programme

At the commencement of the order being placed, we will create and agree a 'lead in' programme of key tasks which need to be completed and the associated time-scales. The programme will identify design and approval periods, sample room lead in period, identify long lead time items, procurement and manufacturing lead times. Critical milestones will be identified and the programme will be monitored by the Contract Manager on a weekly basis to ensure the project remains on track.

As Principal contractor, a detailed construction programme will be created and published to enable client and sub-contractors the ability to plan and monitor progress and on-site dates.

As always, the on-site programme will be monitored on a daily basis. This will allow any issues to be identified in a timely manner and any actions identified can be put in place to ensure smooth running of the project.

Procurement

Once the design process has been completed, the Design manager will remain with the project and assist with the procurement of all items. We feel that this is the best approach for procuring the scheme as the designer is fully aware of all the products, specifications and finishes.

The Contract Manager will also be involved with the procurement, where they will place key-subcontract orders on back to back terms to the main client contract. An initial delivery schedule is also produced at this stage which is interlinked to the main construction programme.

Pre Commencement

Prior to commencement on site, a construction phase health and safety plan, along with logistics plans, delivery routes and site set up will be created and presented to the client and any other group affected by the works. This is usually carried out during pre-start meetings and we feel that this cements all plans into the minds of those involved.

We are also aware of the need to communicate with those buildings or businesses that may be affected by our works and pride ourselves in keeping everyone informed of works and changes that they may feel as an effect upon them.

Logistics

Depending on the location and the restrictions around it, we develop our plans for logistics carefully. We take into consideration parking, loading and drop off points, car parking suspension with local councils and of course the inevitable yearly events that may be happening whilst we are on site. We are used to working in live and

central city locations where pre-planning and thorough engagement with local authorities is of paramount importance. In the past we have utilised an adjacent building that we have rented for the period of the scheme or used off site storage as a marshalling area before bringing equipment and materials to site.

Installation

Our sites are always managed by a non-working site manager, who is fully qualified and often works with an no 2 trainee site manager as an extra layer of cover. The site team is lead in equal parts by one of our Contracts Managers and the appointed QS for the scheme. These are backed up by a buyer and in most cases the Company Director, who have and will always have knowledge of all projects. The client will often see Company Directors

at design team meetings and will be available for client consultation at all times. Our commitment to quality and sub-contractor selection is of the highest importance to us. We have a robust selection process with regard to suppliers and sub-contractors and in many cases, we have formed working relationships over many years culminating in strong working ties & understanding between us.

Project Completion

Upon completion of the project 'as built' drawings will be issued along with the O&M manuals and any life safety documentation. Our Aftercare

team will then be briefed on the project who will then deal with any issues should they arise during the defects liability period.



CGI Design



absolute attention to detail

project.interiors

Precise:

Accuracy and attention to detail ensures our customers get exactly what they want, when they want it.

Robust:

Our robust approach to product design, project delivery and customer services ensures our customers receive high quality products and services that deliver value throughout their enhanced life cycle.

Partnerships:

We take a long-term partnership approach with our clients to deliver the precise solutions they require.

Quality

Quality is of **paramount importance** to us at **Project:interiors**.

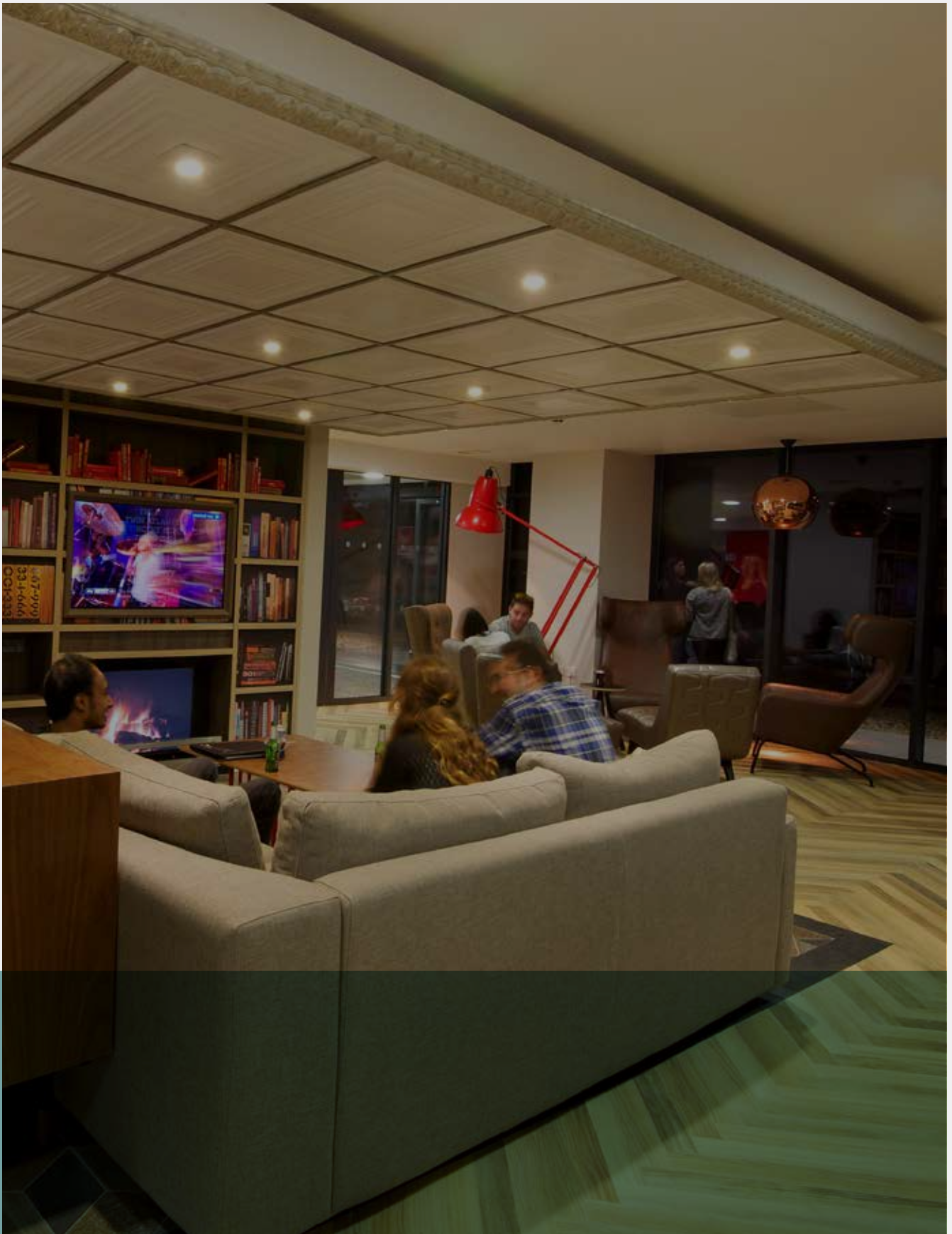
A **Bespoke Quality Plan** will be written for the project which will be issued to the client.

The **Quality Plan covers** the work we and our sub-contractors carry out. It will be reviewed at regular intervals and updated as necessary.

The **Quality Plan describes** the way we will manage our work at all stages of the contract and provide assurance that **our work meets the agreed requirements**.

The Quality Plan will cover the following;

- :: Scope of Works
 - :: Programme
 - :: Responsibilities
 - :: Org Chart
 - :: Competency of Staff
 - :: Design
 - :: Document Control
 - :: RAMS
 - :: Inspection and Test Plans
 - :: Control of Sub-contractors
 - :: Internal Audits
 - :: Calibration
 - :: Control of Non Conformities
 - :: Handling, Storage and Protection
 - :: Record Documents
 - :: Traceability and Certificates of Compliance
 - :: Any Additional Procedures
- We are also **ISO 9001, CHAS**, registered as well as members of Furniture Industry Research Association (FIRA)



Project:interiors
Precise, Robust, Partnerships

Call : 0843 289 5227
Email : enquiries@projectinteriors.co.uk

Dalton House
17 Harrison Road
Halifax
HX1 2AF